

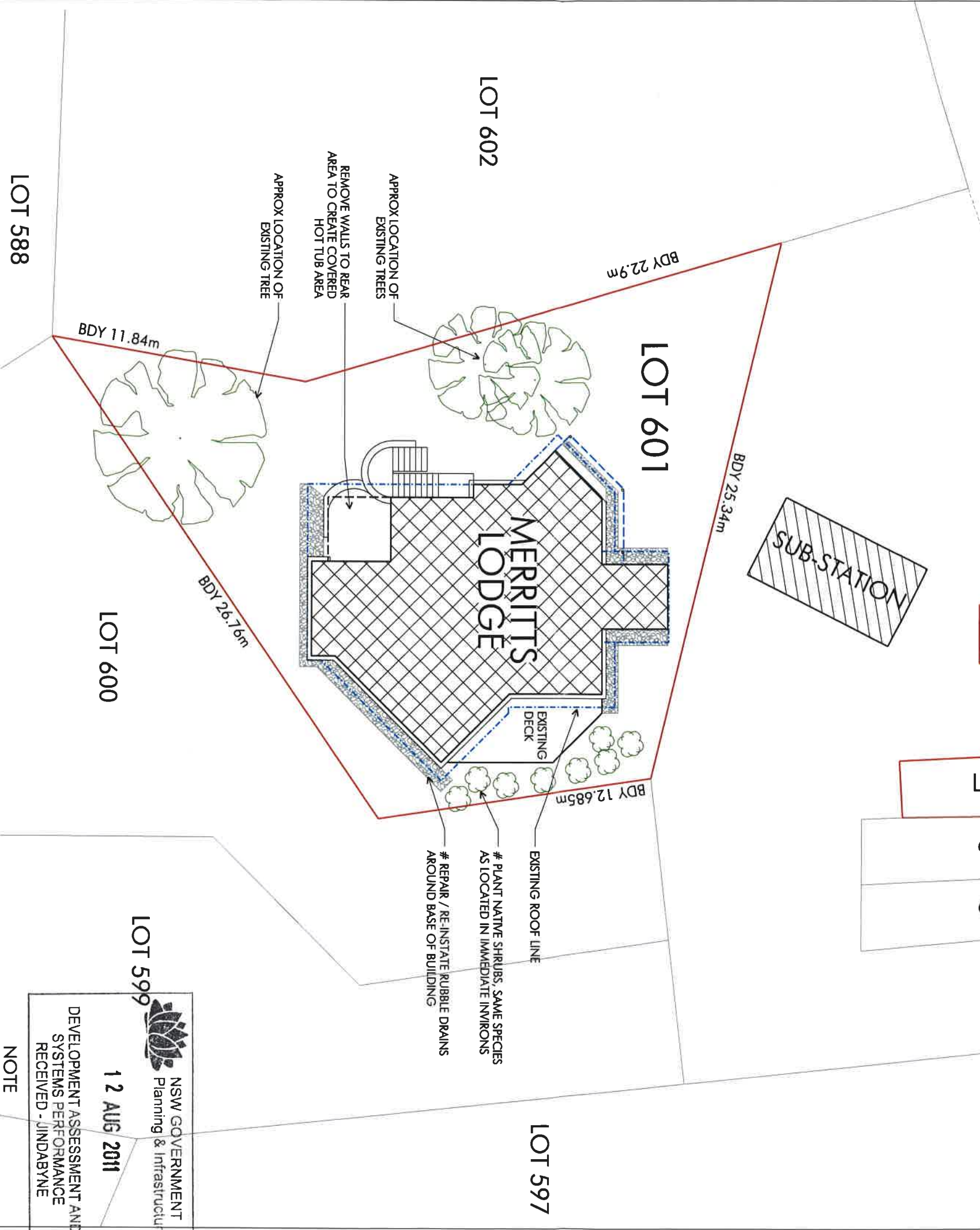
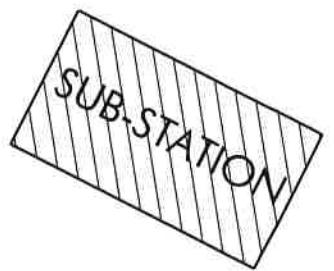


PJD0002634



LOTS 651, 652, 653 ARE ASSOCIATED CAR SPACES FOR LOT 601

MOUNTAIN DRIVE



# SITE PLAN



NOTE  
ITEMS MARKED \*# ARE REPAIRS & MAINTENANCE. THEY ARE SHOWN TO INDICATE THE OVERALL SCOPE OF THE RENOVATION & DO NOT FORM PART OF THE DEVELOPMENT APPLICATION.

NSW GOVERNMENT  
Planning & Infrastructure  
12 AUG 2011  
DEVELOPMENT ASSESSMENT AND SYSTEMS PERFORMANCE RECEIVED - JINDABYNE

Proposed Alterations & Renovations  
at Merritts Alpine Lodge  
Lot 601 DP 1118588  
13 Mountain Dr, Woodridge, Thredbo Village  
For D & L Hickey

North

Datum

Scale 1:200 (A3)

Drawn: DL

www.davidlaw.com.au

**PAVYD LAW**

Project Architects for  
**ezy architects** Pty Ltd  
Architects, Landscape Architects, Shadow Studies, Interior Design  
Central Coast Office - 37 Boyview Ave, East Gosford, 2250  
david@davidlaw.com.au Ph (02) 4323 3935, Fax (02) 4323 3932

Development Application

Ref No. HICKEY-DA

Sheet 1

Issue A